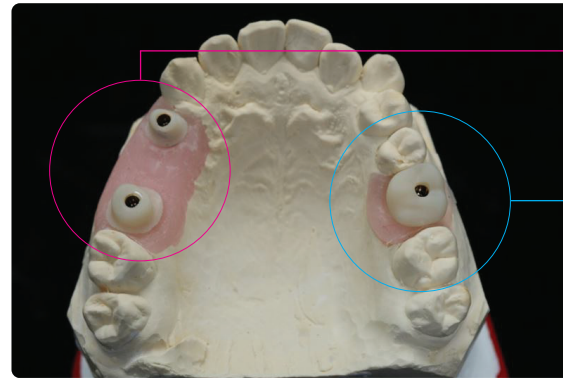






## What can be fabricated



1. Fabricated as  
abutments for bridges

2. Fabricated as  
final crown

## Product Line-up

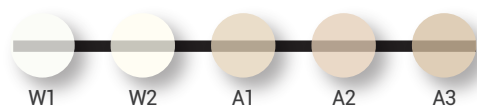
	Amber <sup>®</sup> Mill Abut-Crown	Dimension (mm) W x D x H	Translucency
straight	 <i>for posterior</i>	CS1012 TB	10 × 10 × 12
		CS1014 TB	10 × 10 × 14
		CS1016 TB	10 × 10 × 16
		CS1212 TB	12 × 12 × 12
		CS1214 TB	12 × 12 × 14
		CS1216 TB	12 × 12 × 16
15° angled	 <i>for anterior</i>	CS1012 TB15	10 × 10 × 12
		CS1014 TB15	10 × 10 × 14
		CS1016 TB15	10 × 10 × 16
		CS1212 TB15	12 × 12 × 12
		CS1214 TB15	12 × 12 × 14
		CS1216 TB15	12 × 12 × 16

\* Packaging : **Block** (1ea) + **Screw** (2ea/Coated,Non-Coated)  
+ **Hole keeper** (1ea/A hole keeper that matches the shade of the selected block)

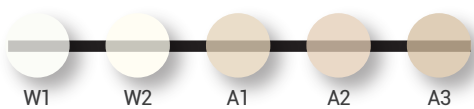
\* For more information or personalized assistance, please reach out to our sales team.

## Available Shades

HT(High Translucency)



LT(Low Translucency)



### HASS Corporation

77-14, Gwahakdanji-ro, Gangneung-si, Gangwon-do,  
KOREA 25452  
Tel: +82-70-7712-1300 / Fax: +82-33-644-1231  
Customer Support : +82-2-2083-1367  
E-mail : hasscorp@hassbio.com  
Website : www.hassbio.com

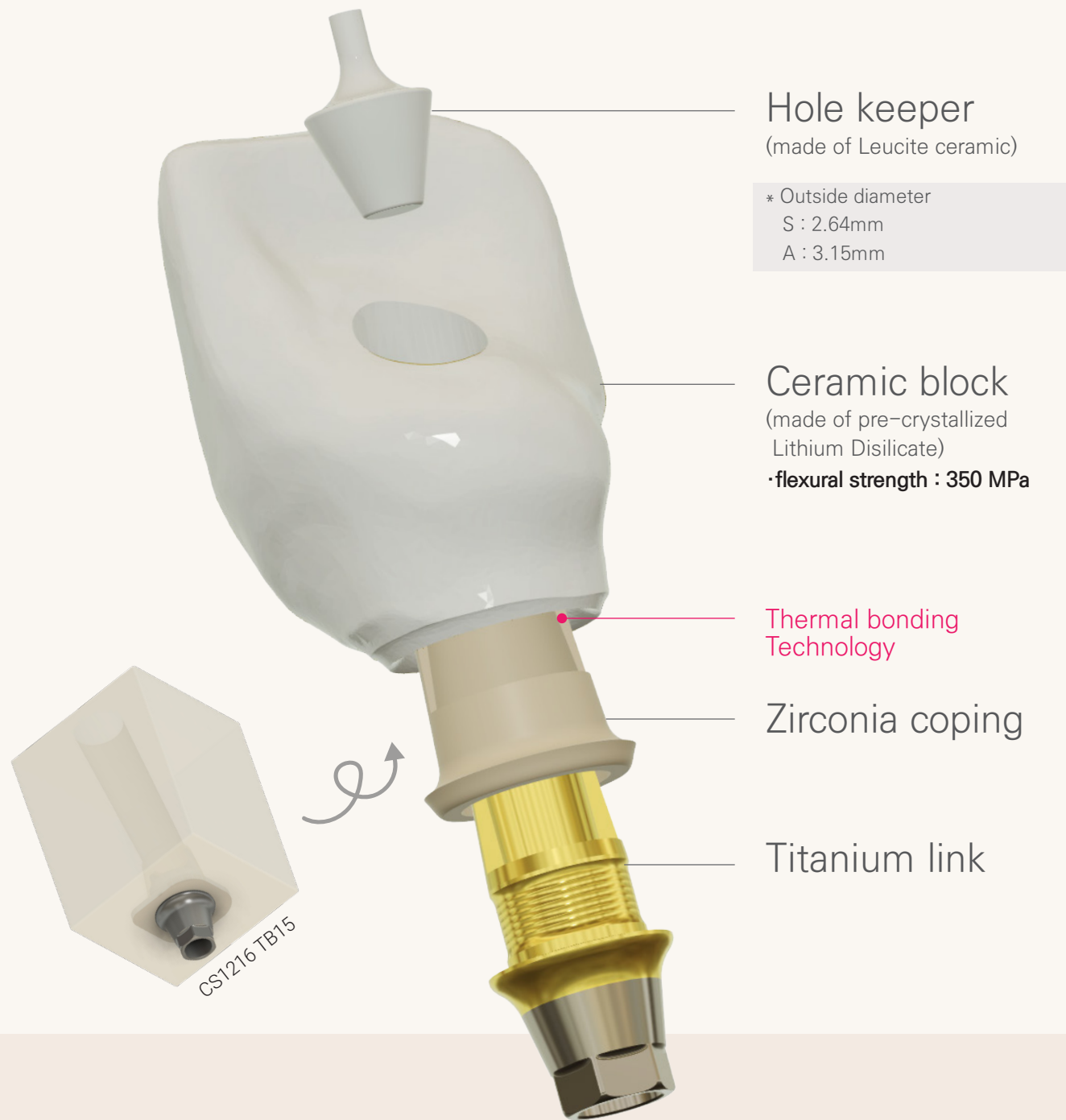
This material is designed for usage in dentistry. Follow instructions HASS is not liable for any loss caused by failure to comply with regulation or scope of indication. Users are responsible for testing products to verify the compatibility for any usage which are not written in the instructions. The explanations and data contained within do not carry any guarantees and/or obligations. All enclosed recommendations and restrictions apply when used with products from other manufacturers.

EN

Innovative design and unparalleled performance

# Amber<sup>®</sup> Mill Abut-Crown

# Structure of the Amber Mill Abut-Crown



Hole keeper  
(made of Leucite ceramic)

\* Outside diameter  
S : 2.64mm  
A : 3.15mm

Ceramic block  
(made of pre-crystallized Lithium Disilicate)  
·flexural strength : 350 MPa

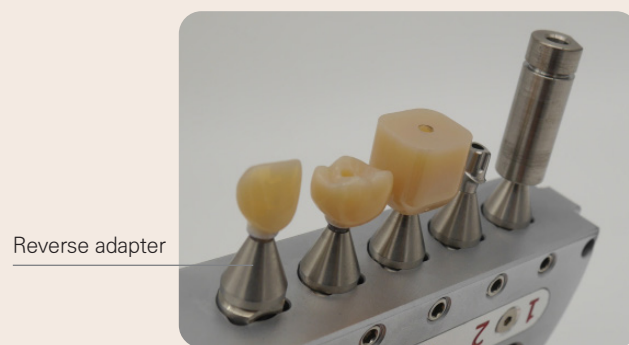
Thermal bonding Technology

Zirconia coping

Titanium link

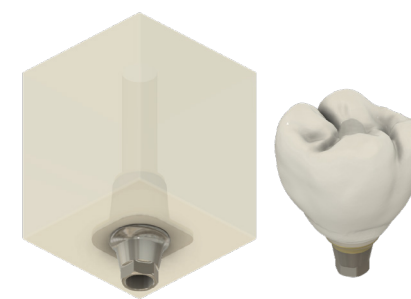
## How to mill

- Requirement: 4X, 5X wet milling machine
- Milling strategy: can be achieved with HyperDent, MillBox, Go2CAM
- Block library is available for Exocad, 3Shape
- Milling time: approx. 30 minutes for single crown

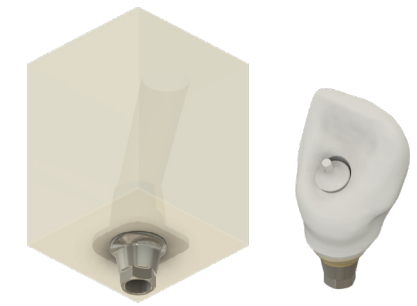


Reverse adapter

\* It's the same principle as titanium abutment processing using reverse jig.



Amber<sup>®</sup> Mill **Abut-Crown**  
straight



Amber<sup>®</sup> Mill **Abut-Crown**  
15° angled

## Time saving

- Amber Mill Abut-Crown will consist of a zirconia insert and a titanium link, which will be combined with the block by inorganic bond. This innovative design streamlines the complex and time-consuming process of traditional implant crowns, offering dentists and dental technicians a one-day implant crown solution.

## High aesthetics

- Amber Mill Abut-Crown crafts restorations with micro structures varying in strength from the cervical to incisal areas, achieving natural translucency with out extra processing.
- Zirconia coping masks the metal color of the titanium link(abutment) and prevents ceramic from cracking due to screw tightening.
- Lithium Disilicate is an aesthetically pleasing prosthetic restoration material.
- 'Hole Keeper' achieves a natural-looking shade match.

